

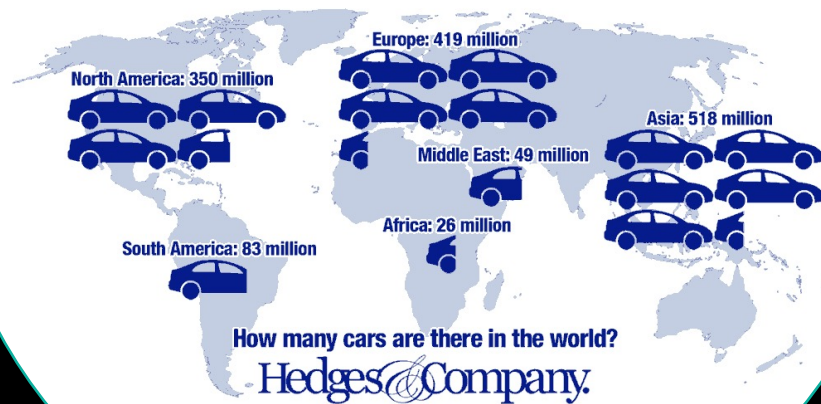


Any user, Any vehicle, Any app

Coordination Problem

1.5 bn

personal vehicles used
<5% of the time

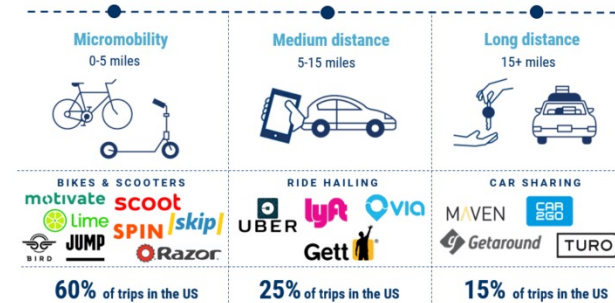


\$6tn

Disconnected Ground
Mobility Marketplace

DISRUPTING THE CAR

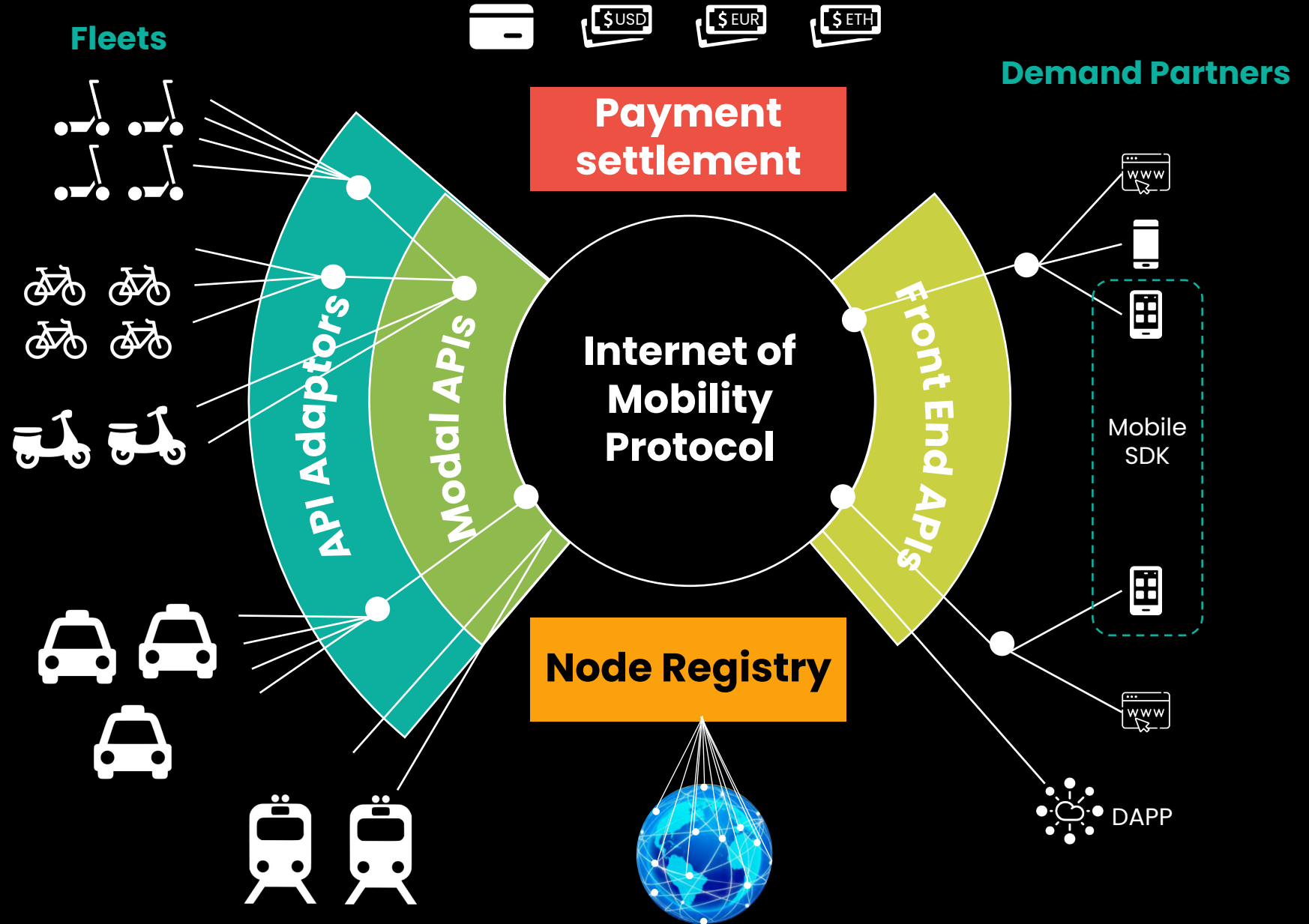
Alternatives to car ownership by trip length



Source: NHTS

CBINSIGHTS

IoM Network



The Internet of Mobility Protocol

\$6tn

Disconnected Ground Mobility Marketplace

Mobility as a Service

- D2D Mobility for public and private transport users
- \$3.3 billion in 2021
- \$40bn by 2030

EV Charging Networks and P2P

- Seamless access to public and private EV charging stations
- \$14.9bn in 2020
- \$115bn by 2027

P2P Carsharing

- Enable private vehicle owners to connect to IOM for passive income
- \$1bn 2020
- \$7bn 2030

Last Mile Logistics

- Provision of the IOM network of vehicle to decentralized delivery services
- \$108bn in 2020
- \$200bn by 2027

Enabled by

2022

2023

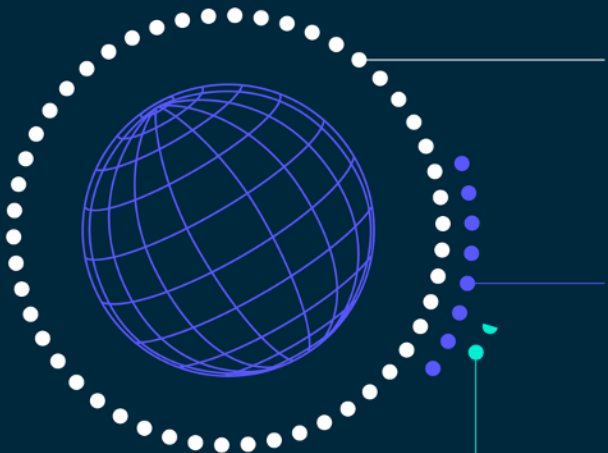
2023-2024

2025

IOM Protocol



4 WAYS THAT MULTIMODALITY CAN REDUCE CO₂ EMISSIONS GENERATED BY TRANSPORT



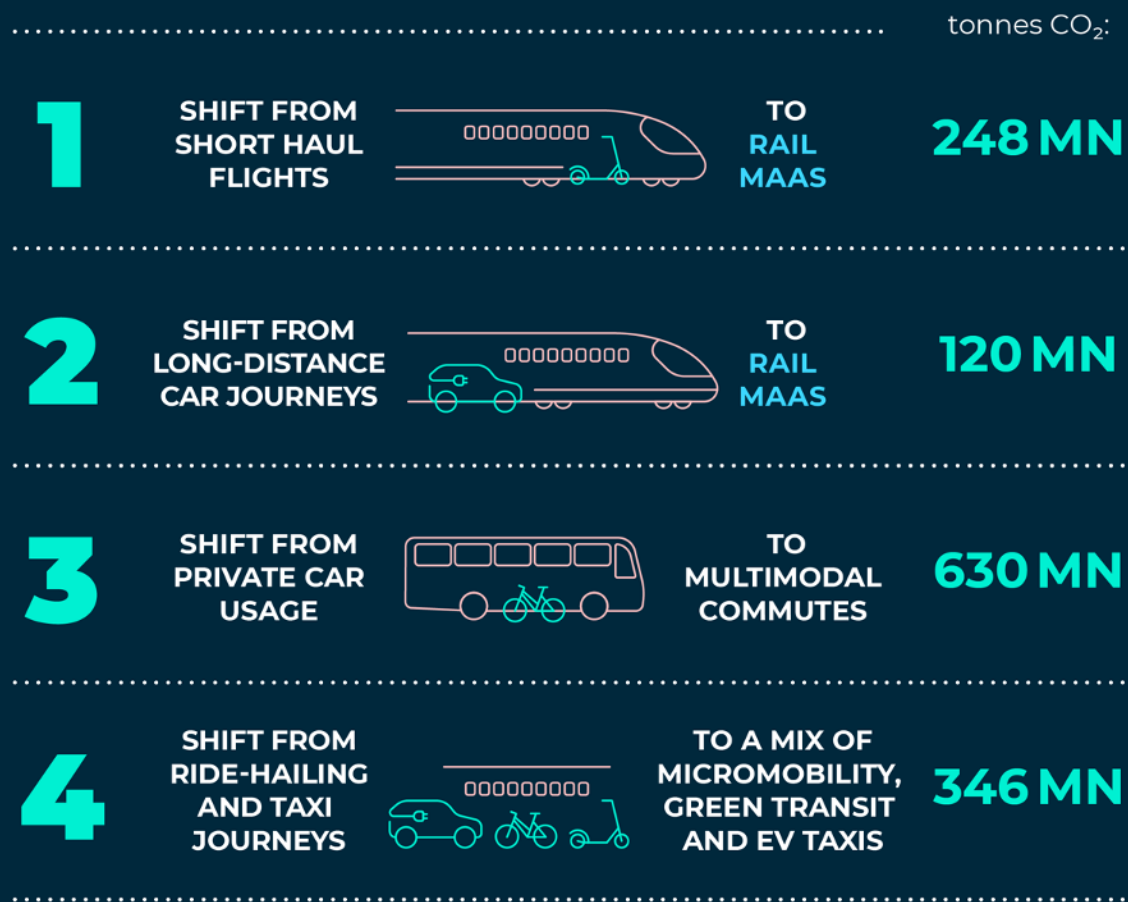
Total global
GHG emissions
51 BN
tonnes CO₂e

Total global
CO₂ emissions
from **transport**
8 BN
tonnes CO₂

Avoidable emissions represents the total amount of emissions that could be avoided by shifting away from using certain modes of mobility and replacing them with lower or zero-emission multimodal choices.

Estimated total **avoidable emissions** through a shift to clean multimodal mobility

1,34 BN
tonnes CO₂



RAIL MAAS enables seamless door to door journeys that include rail travel combined with clean first and last mile mobility modes.

Traction



Global SI Partners



35mn daily users



Largest Global SI – 1st Client has 30mn annual users



Enterprise Clients



Target 2mn passengers in 2022



20mn annual passengers






1.5mn annual users



MSP Marketplace



Path to Mass Adoption

	EOY 2022	EOY 2023	EOY 2024
 Massive Coverage – Millions of users with coverage	90mn	300mn	1bn
 Massive Utility – \$ exchanged	600k	12mn	60mn
 High Decentralization – # Non-Iomob Operated nodes	0	10	100



Clients/ Partners



Awards



Press

brightline

LNER
LONDON NORTH EASTERN RAILWAY

REGION
SKANE

BUSUP **renfe** **Ford**

TransSIGHT
CONNECTING THINGS. INNOVATING

Urban Foresight

tcs | **TATA CONSULTANCY SERVICES**

CUBIC
Transportation Systems

FROST & SULLIVAN
Product Leadership Award
The Europe Open Mobility Marketplace Market
Excellence in Best Practices

transformo
your way to the future

TTF TRAVEL FORWARD LONDON

ERTICO
ITS EUROPE

FIA

SOUTH SUMMIT
INNOVATION IS BUSINESS

PLUGANDPLAY

Phocuswright Europe

AUTONOMY
THE URBAN MOBILITY SUMMIT

RealBusiness

SmartCitiesWorld

TAGES SPIEGEL

Newsweek

the newsmarket

CNBC

Bloomberg

LA VANGUARDIA

ITS International

FT FINANCIAL TIMES

Intelligent Transport

Global Railway REVIEW

Automotive World est. 1992



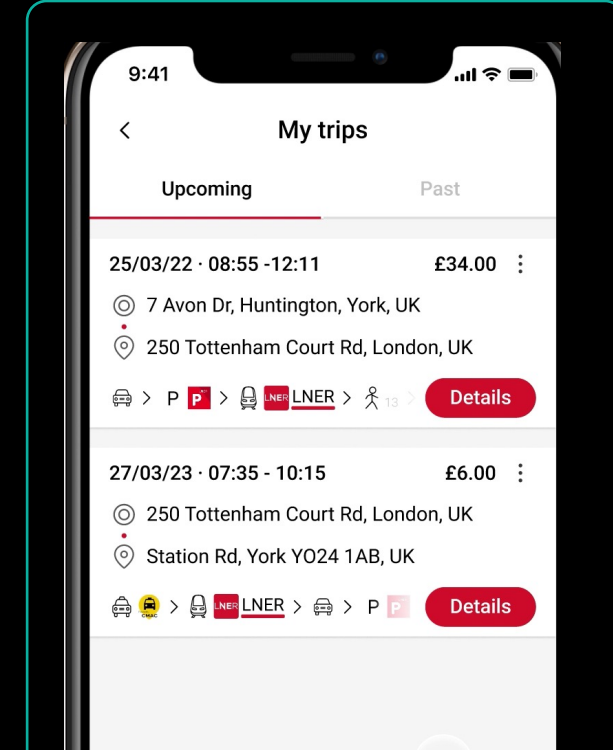
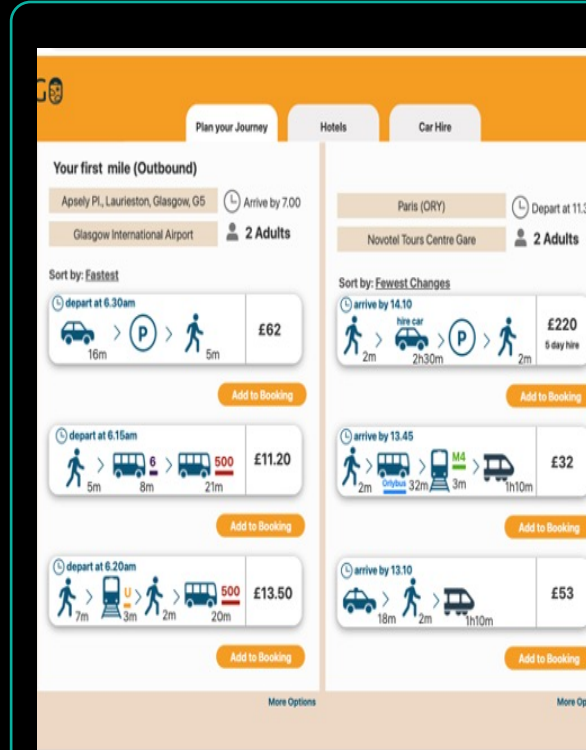
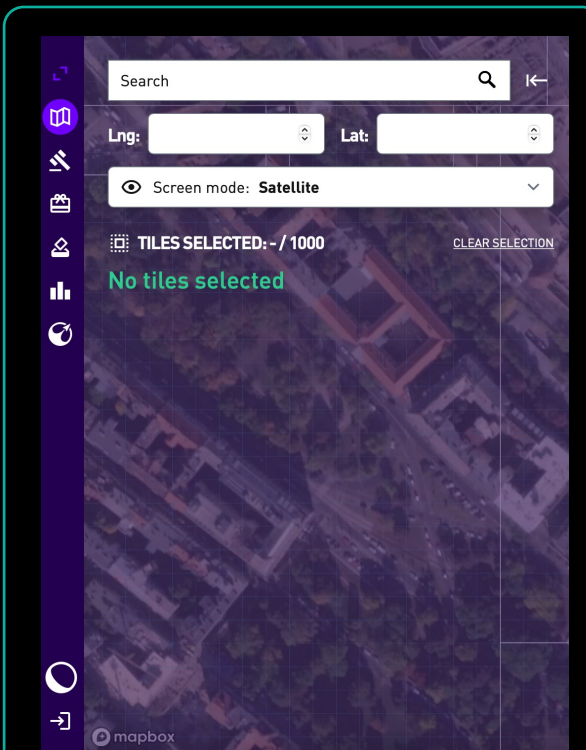
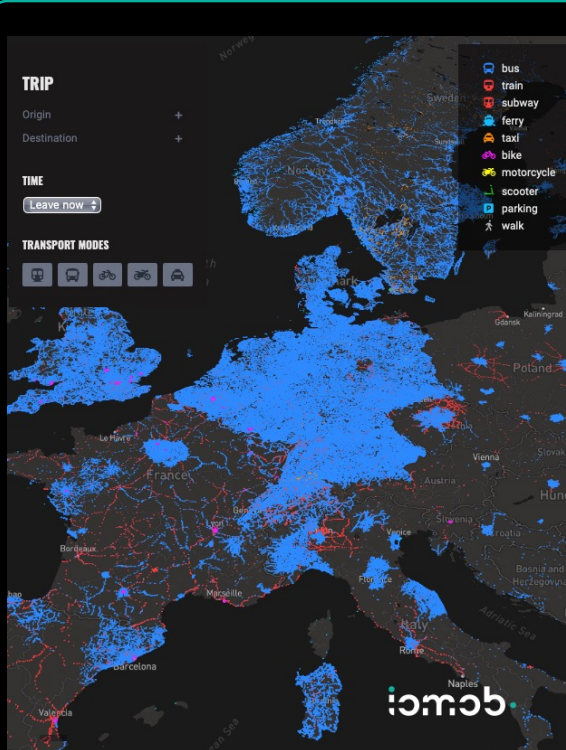
4 Steps to Enabling Metaverse MTA

1) Digital Layer for Base Transport Ecosystem

2) Metaverse Journey Planner

3) MTA Booking/
Payment &
Token incentives

4) MTA Companion App



Extensive corporate & start/scale up experience in mobility and software development

Team: Barcelona, London & Dubai



Boyd Cohen, PhD
Co-Founder & CEO



Josep Sanjuas, PhD
Co-Founder & CTO



Victor Lopez, PhD
Co-Founder & Director of Software Engineering



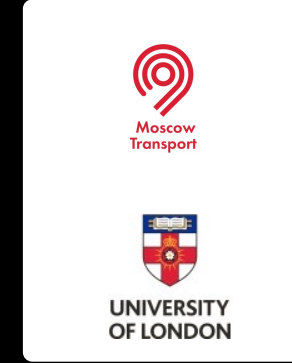
Adrian Ulisse
Chief Revenue Officer



Elizabeth Obediente
Director of Product



Maria Andrianova
Director of IR &. MENA



Advisors



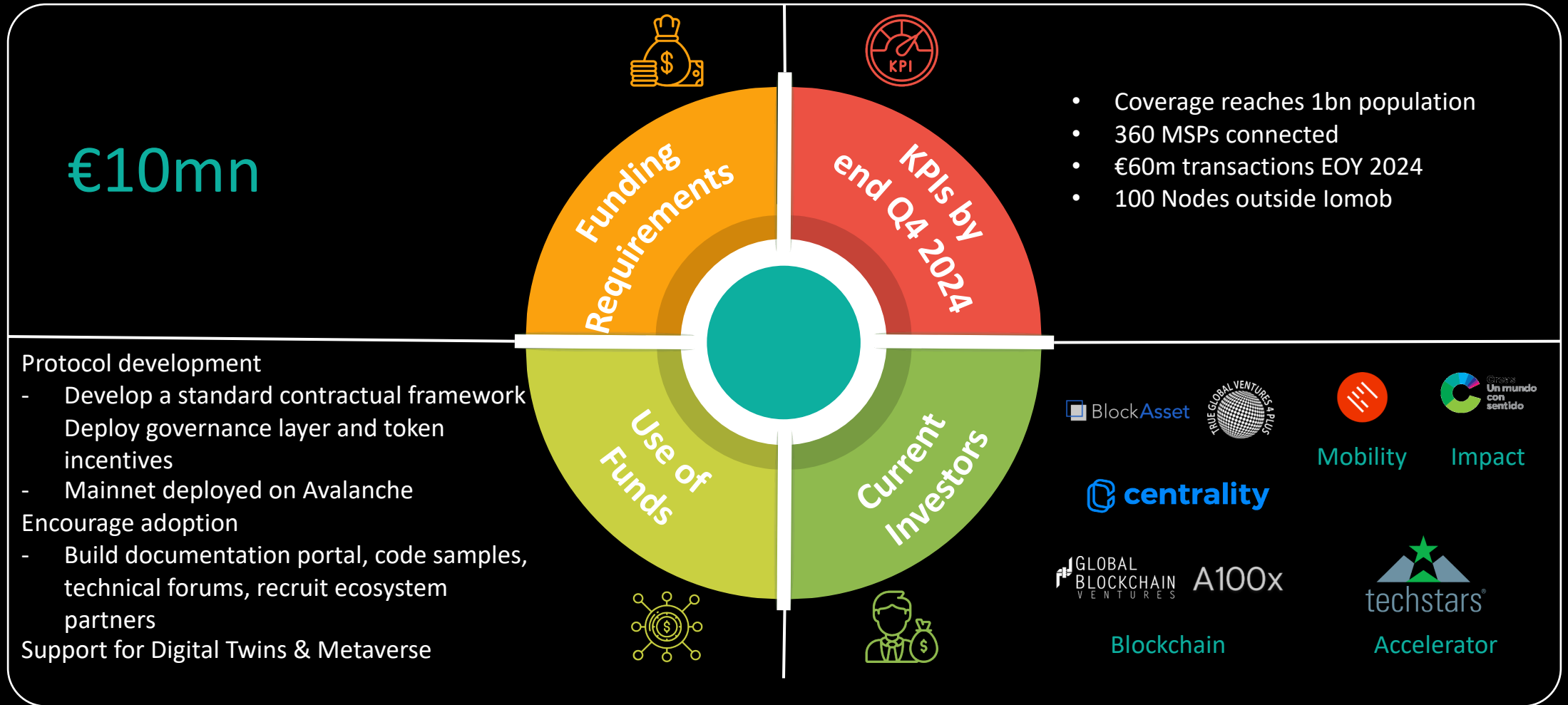
David Lee
Investor & Blockchain Advisor



Neil McLaren
Blockchain Tech



Scaling the IOM Protocol





Any user, Any vehicle, Any app

Boyd@iomob.net